



PNM Attire Lookbook

February 2024

Important Reminder

Before choosing your clothing for the formal recruitment process, it is important to keep in mind that the university of Delaware's Panhellenic Community upholds a values based recruitment.

What is Values Based Recruitment?

Values based recruitment is our way of centering the recruitment process for both the sorority member and the potential new member on the rich core values of each inter/national women's organization to help ensure a rich experience for all who participate. It sees that there is a heavy importance placed on the personal connection between both the sorority member and the potential new member.

Tip #1

Limit the amount of accessories you wear. This includes flashy jewelry or excessive hair accessories.

Tip #2

There will be rooms in each location for PNMs to store bags/ winter clothing. Be sure to bring a jacket for the cold February weather!

Tip #3

Prioritize comfort!! You will be standing for the most part during events as well as may need to walk from event locations.

Tip #4

When deciding what pieces from your wardrobe you want to wear during recruitment, choose articles that have some meaning or story behind it! This makes for great conversation topics to use during events.

Tip #5

If you are ever unsure if your chosen outfit will be satisfactory for a round, please reach out to your Rho Gamma for confirmation before you arrive for your first event.

Tip #6

The recruitment process is all about you and how you feel! Be confident, comfortable, and feel good in the clothing you choose to wear. Sisters are there to get to know you and not the latest fashion trend:)

Values round

DOs

- This round is on zoom so get comfortable!
- PNM T-shirt (will be distributed at PNM Orientation)
- Any type of comfortable bottoms
- slippers!

DON'Ts

- Flashy Jewelry



Friday, February 9th & Saturday, February 10th

Virtual

Philanthropy

DOs

- Casual attire
- PNM T-shirt
- Jeans (minimal to no rips) or dark wash pants
- flats or any type of sneaker

DON'Ts

- Jeans that are not a shade of blue or black
- Open-toe shoes or shoes with a heel
- Leather pants
- Jeans with lots of rips
- Flashy jewelry



Sunday, February 11th

In Person

Sisterhood

Same attire as philanthropy

This can be the same outfit you wore from the last round or a slightly different version. Similarly, please keep this round's attire as basic as possible and focus on your values you are representing!

****If you choose to wear any article of clothing or accessory that has been advised against, your Rho Gamma may ask you to leave Recruitment and return with the correct attire.****

Friday, February 16th & Saturday, February 17th

In Person

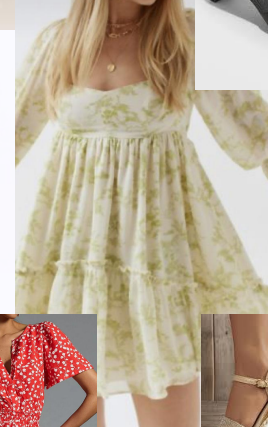
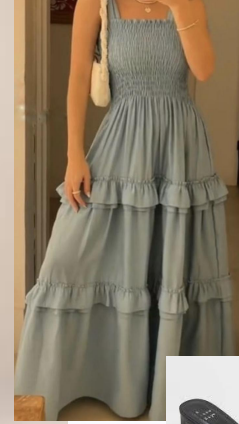
Preference

DOs

- Formal attire - think sunday brunch with your grandparents
- Dress, romper, pantsuit, jumpsuit, or skirt with nice blouse
- Short heels, sandals (can be open toed), booties, any comfortable shoes

DON'Ts

- Bodycon dresses with lots of cut-outs
- Heels that are too high to walk in/ stand in for a long time (keep in mind this round is 45 min long)
- Flashy jewelry



Sunday, February 18th

In Person

Bid Day

For Bid Day festivities, you will arrive to Trabant in your choice of jeans or pants that meet the dress code from Philanthropy and Sisterhood, as well as a comfortable t-shirt or top you'd like.

After Rho Gamma Reveal and bid distribution, you will be given a t-shirt from your new chapter to be worn for the rest of the evening. Each chapter has a theme to their bid day festivities that is kept very secret until after bid distribution, so it is ok that you do not come dressed to your new chapters theme!



Monday, February 19th

In Person